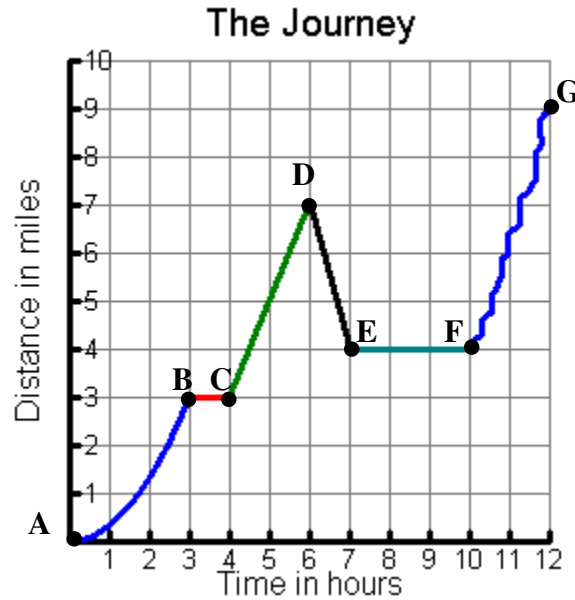


OBJECTIVE: You will be able to write a piecewise function from a graph.



Trip and Trey Pull entered a three-legged, nine-mile, sibling race. Below is a graph of their journey showing the distance they traveled versus their time.



1. Describe the journey taken by Trip and Trey between each pair of points. Be as specific as you can. If their rate is constant, please include the rate for each interval. Hint: $distance = rate \bullet time$.

a) A and B

b) B and C

c) C and D

d) D and E

e) E and F

f) F and G

2. How far did Trip and Trey actually travel on their journey?

3. Does Trip and Trey's journey graph represent a function? Explain.

4. Write an equation for each leg of the journey.

a) A and B

b) B and C

c) C and D

d) D and E

e) E and F

f) F and G

5. Use the equations from #4 to write a **piecewise** defined function for Trip and Trey's journey.

$$f(x) = \left\{ \begin{array}{l} \\ \\ \\ \\ \\ \\ \end{array} \right.$$

